

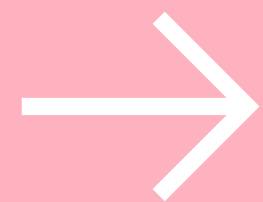


Infrastruktura WSZiB w Krakowie ● ● ●



**WYŻSZA SZKOŁA ZARZĄDZANIA
I BANKOWOŚCI W KRAKOWIE**

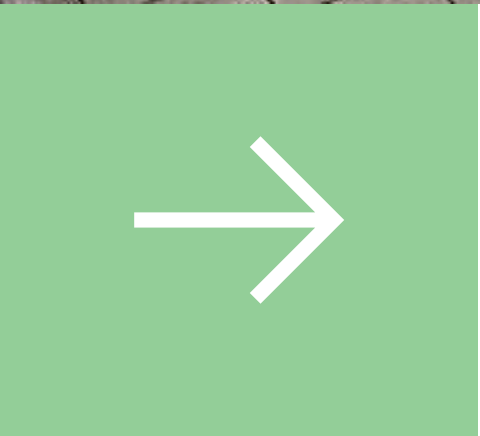


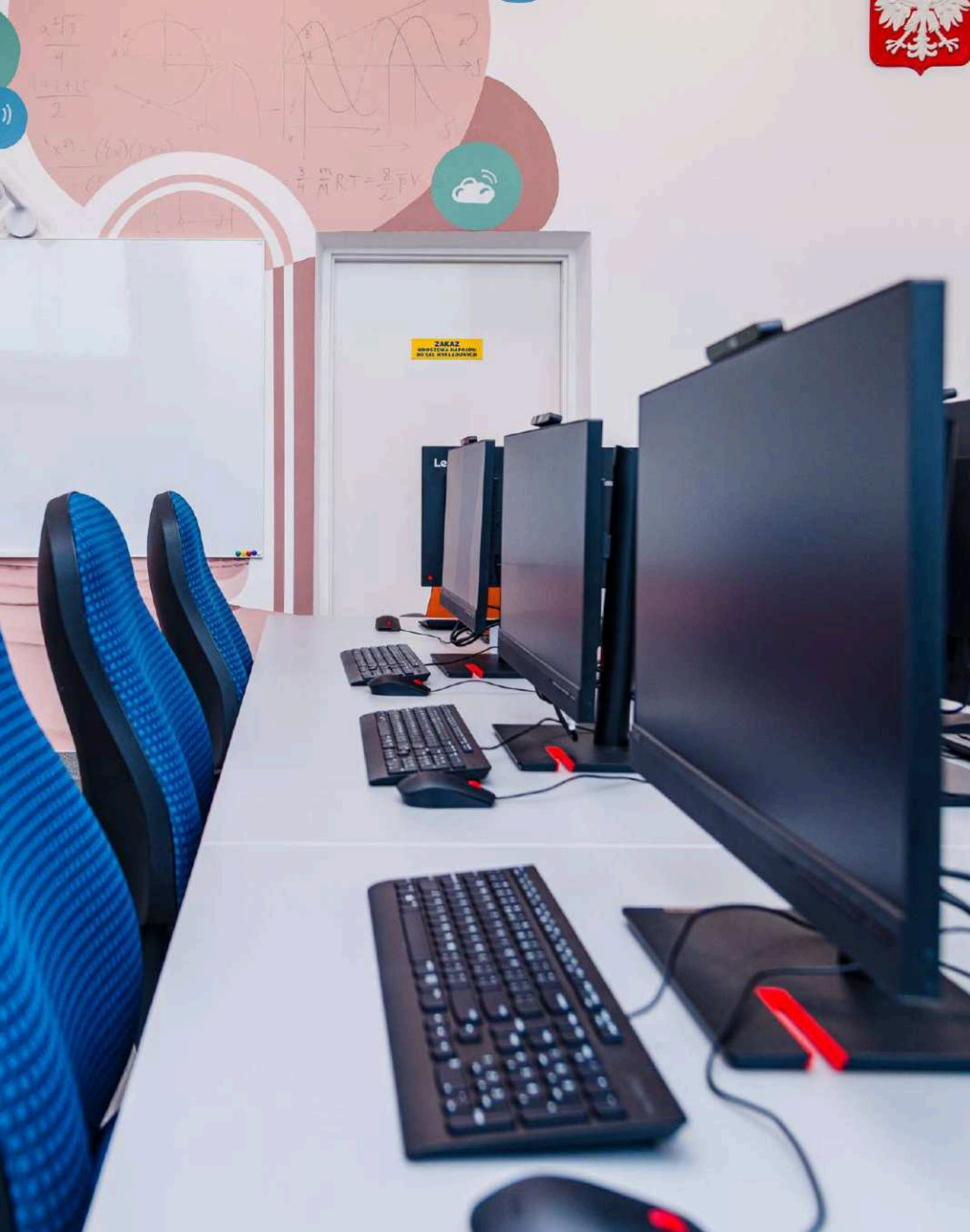


Łączna powierzchnia:
9 612 m²



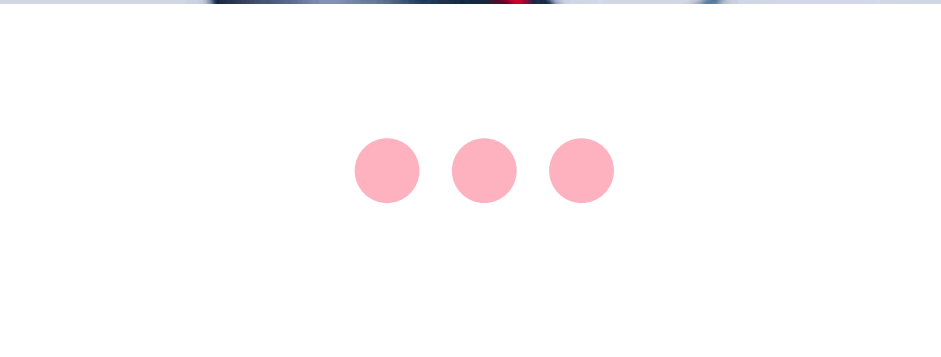
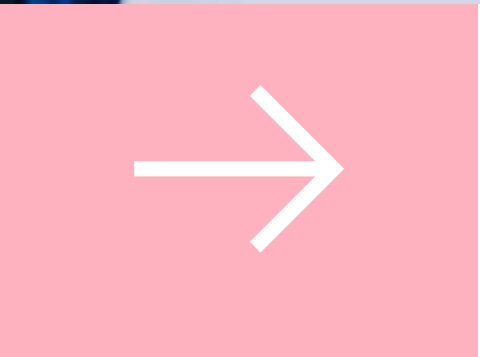
OTOCZENIE
WSZIB

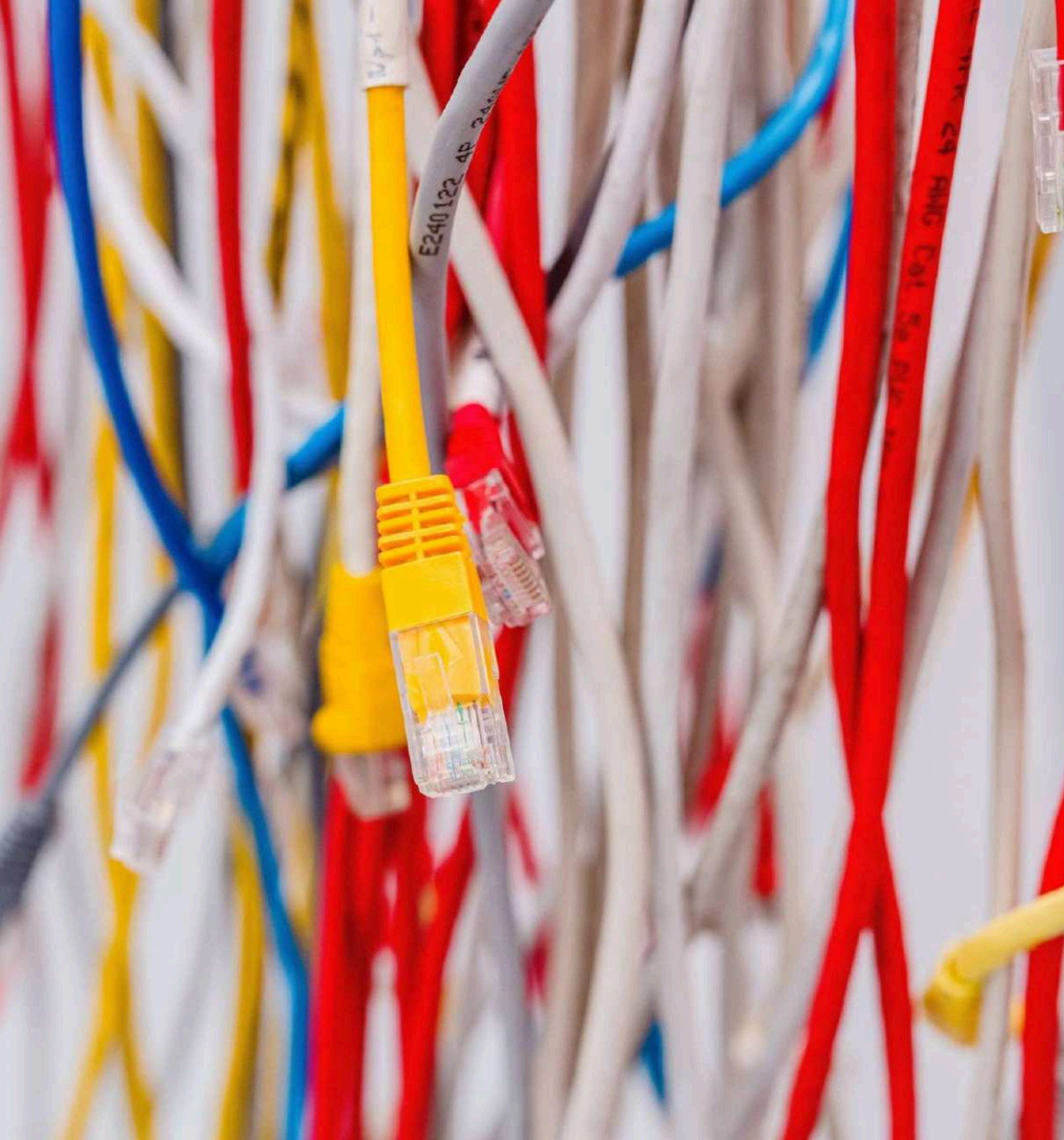




Pracownie i laboratoria komputerowe

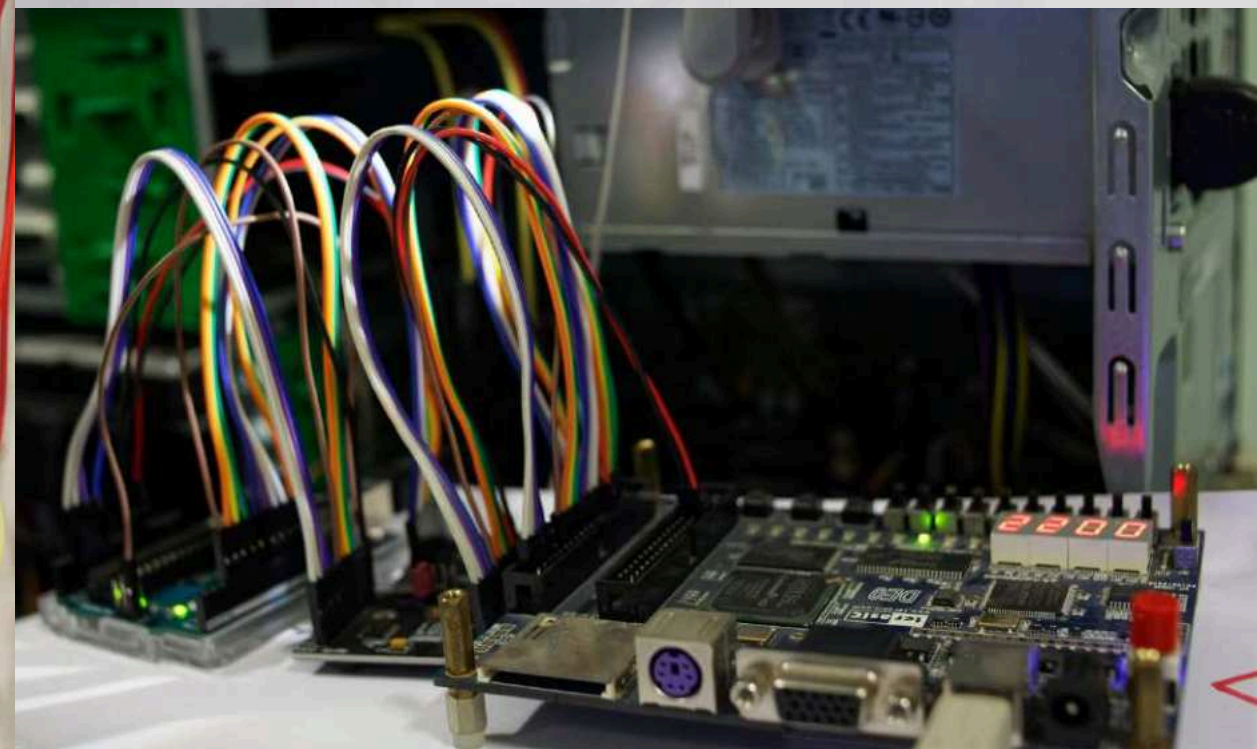
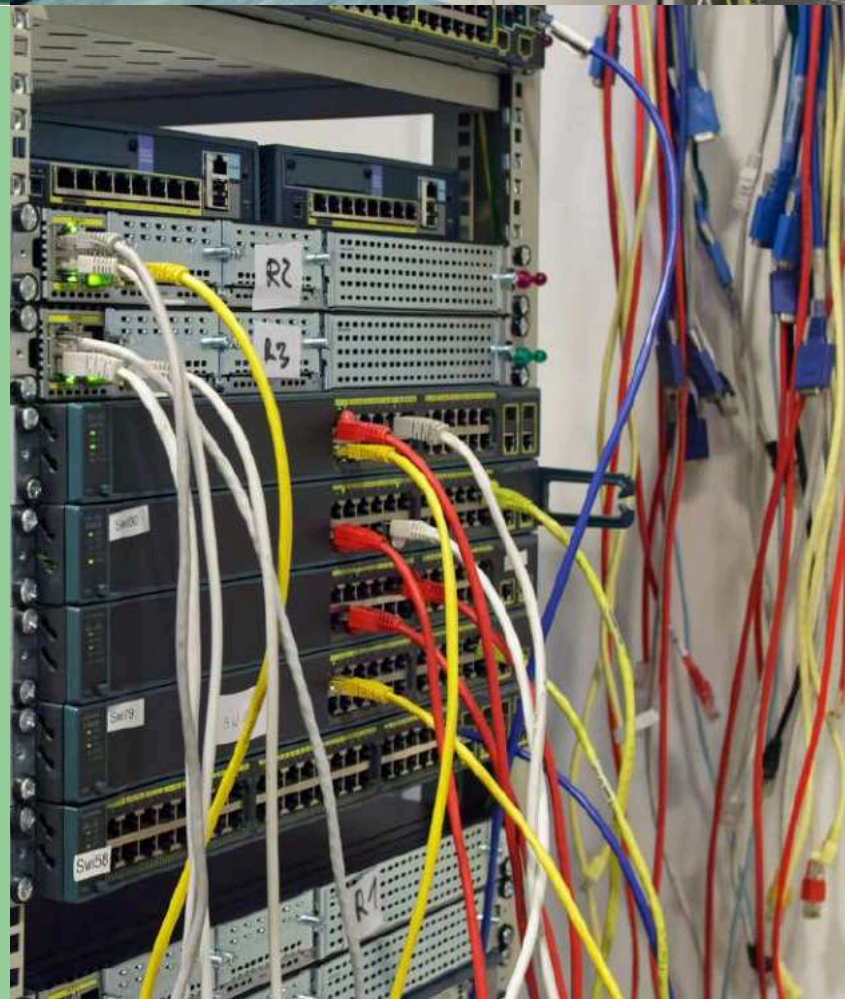
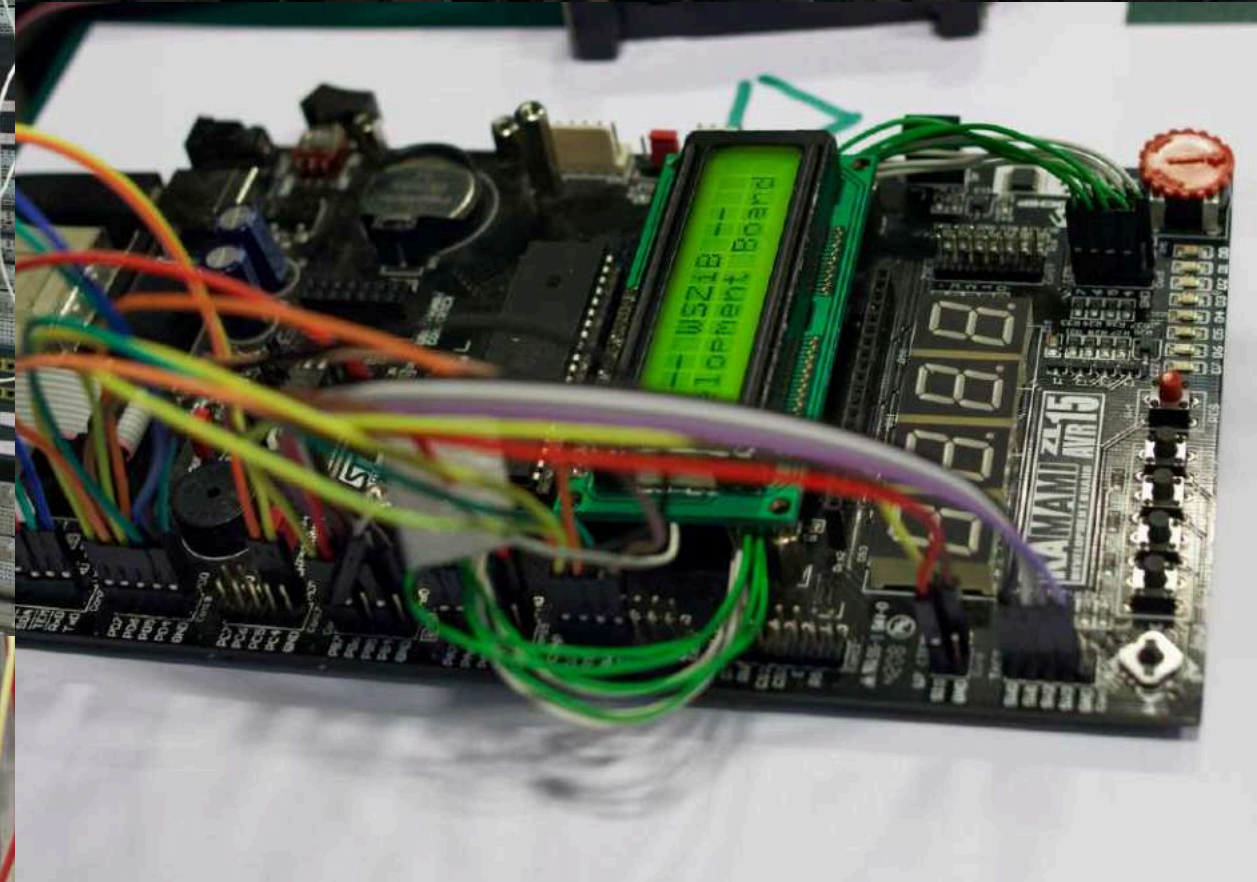
4 specjalistyczne laboratoria komputerowe
8 pracowni komputerowych
350 stanowisk komputerowych



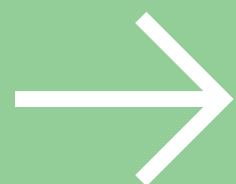


Pracownie i laboratoria komputerowe



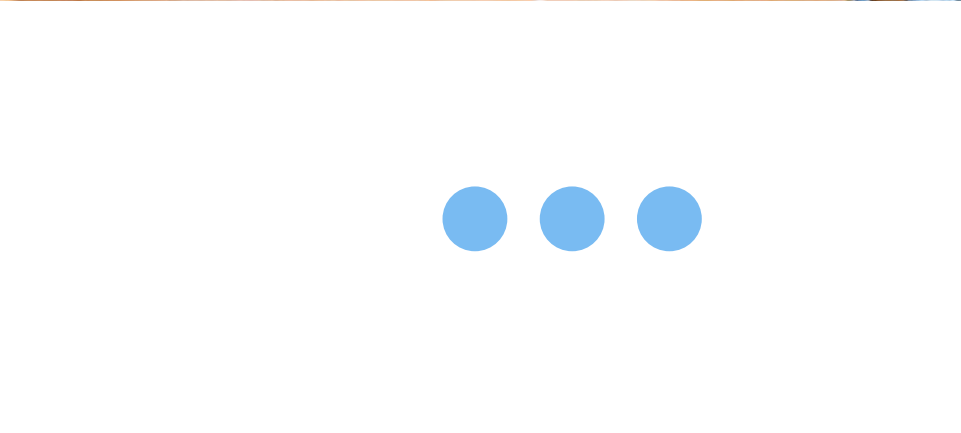
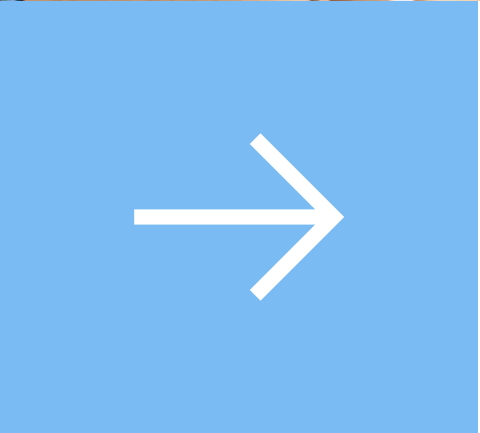


Pracownie i laboratoria komputerowe





Sale
dydaktyczne
al. Kijowska 14





Sale
dydaktyczne
al. Kijowska
14

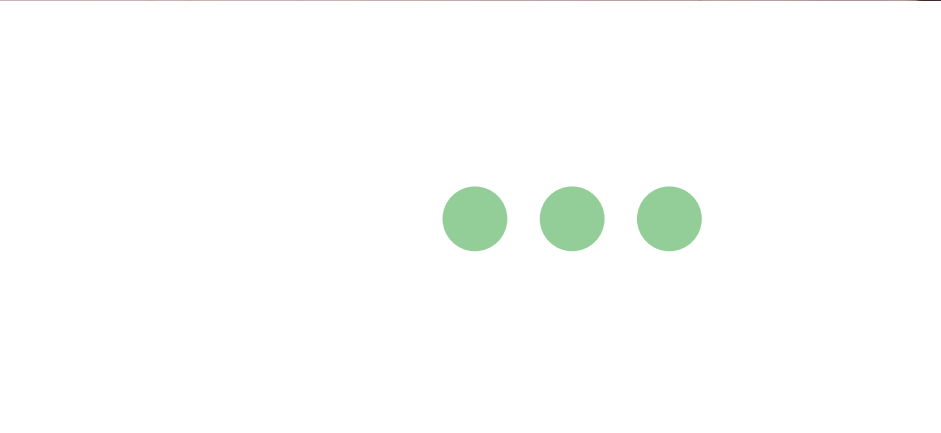
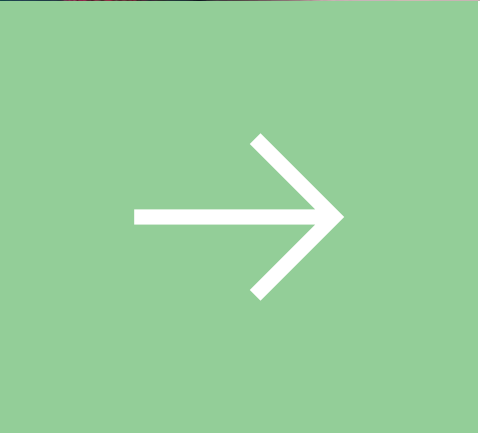
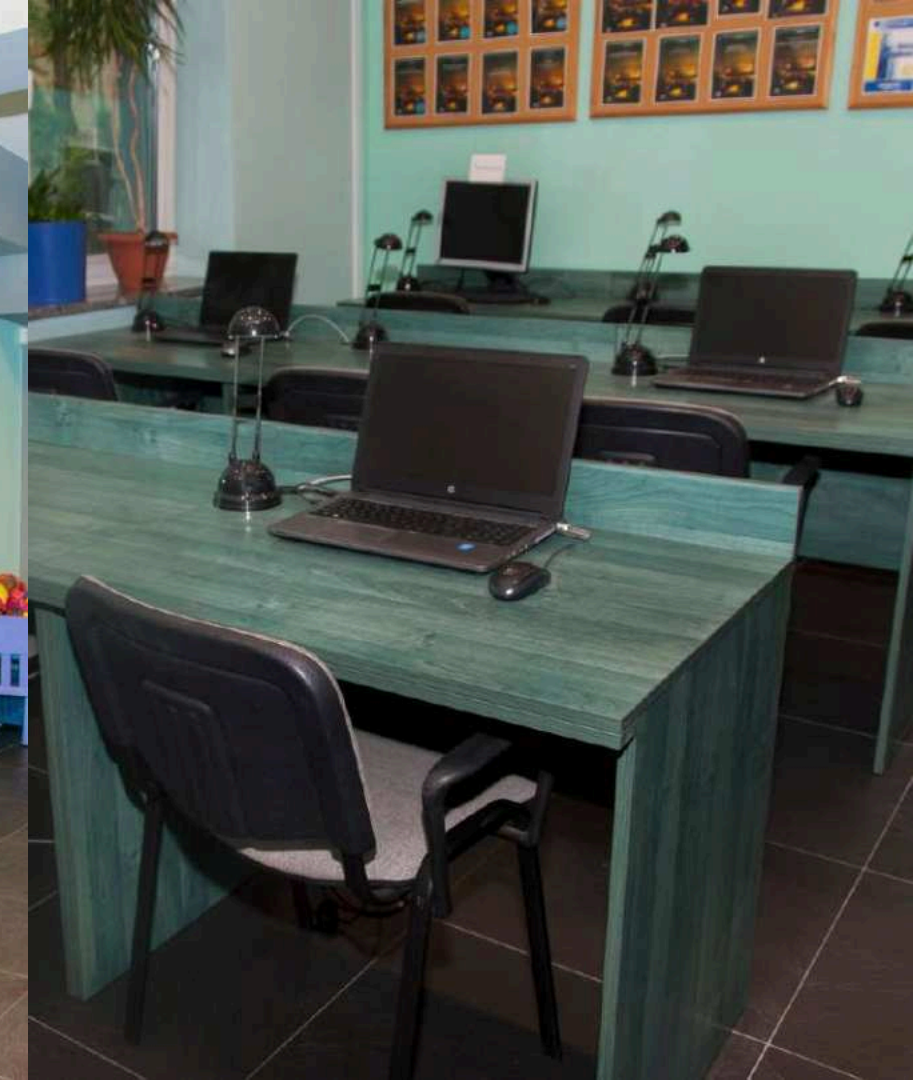


28 sal
wykładowych
3 sale
seminaryjne





Biblioteka





Sale
dydaktyczne
ul. Armii
Krajowej 8

12 sal
wykładowych



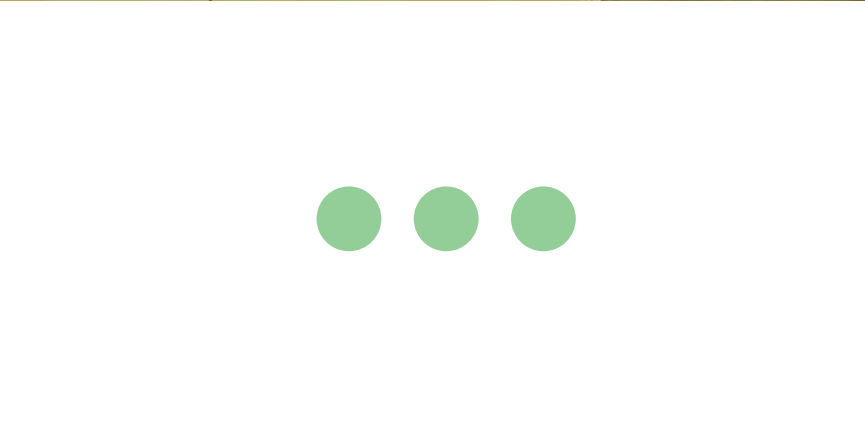
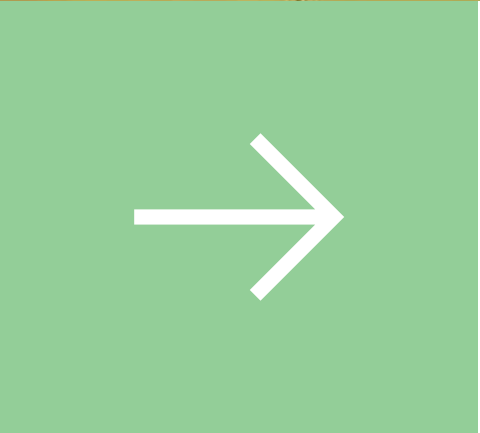


Sala obron





Dziekanat
Stypendia
Administracja

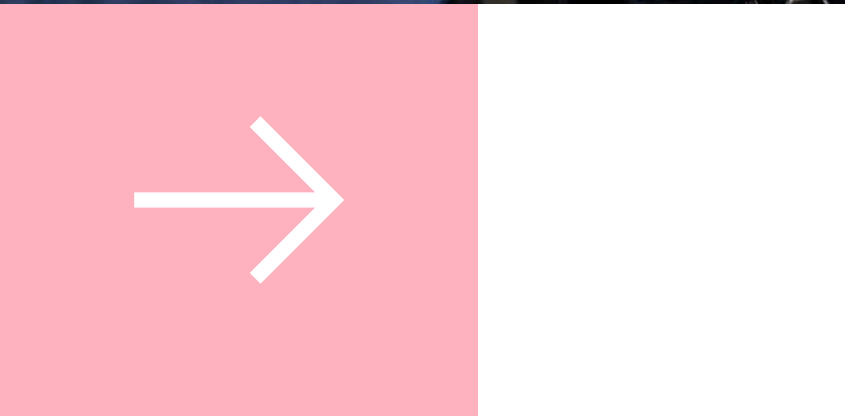


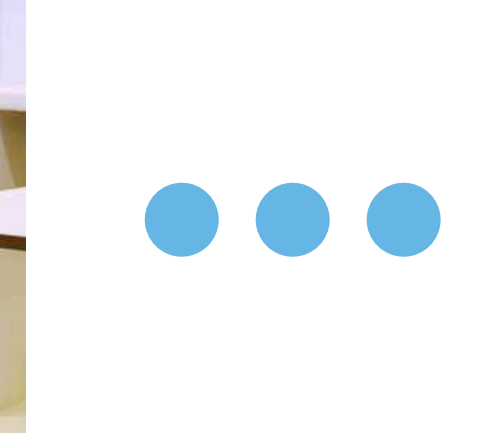


Udogodnienia dla
niepełnosprawnych



Studio
multimedialne





→ Strefy dla studentów





Strefy dla studentów





Strefy dla
studentów